

# The SAT<sup>®</sup> and SAT Subject Tests<sup>™</sup> Registration Quick Guide

## Registration Requirements

When you register for the SAT<sup>®</sup> or SAT Subject Tests<sup>™</sup>, you'll need to supply:

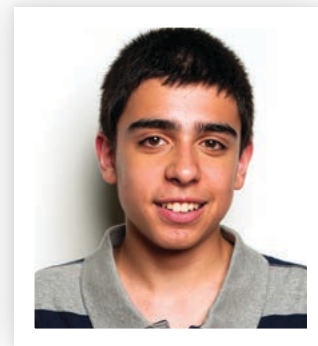
- 1 Your full legal name as it appears on your photo ID and your date of birth, sex, mailing address, and current grade level.
- 2 An acceptable photo of yourself that closely resembles the photo on your ID and that will match how you look on test day. See more below.
- 3 Your high school code. Find this at [collegeboard.org/sat-codes](https://collegeboard.org/sat-codes), or ask your school counselor.
- 4 The test type (SAT, SAT with Essay, or SAT Subject Tests), the test date, and the test center you are choosing.
- 5 Acceptance of our terms and conditions, either online or by completing and signing the paper registration form.
- 6 Payment or a fee waiver.

## Photo Requirements

You must submit a photo when you register. Make sure your photo:

- 1 Shows only you—no other people are visible.
- 2 Shows a head-and-shoulders view with the entire face, both eyes, and hair clearly visible (a head covering worn for religious purposes is acceptable).
- 3 Is properly focused with no dark spots or shadows.

Visit [sat.org/photo](https://sat.org/photo) for more information on photo requirements.



## Registration Deadlines

Whether you are registering online or by mail, or plan to test in the United States or another country, you'll find the dates and deadlines you need to know about on the back of the *Student Registration Booklet* or at [sat.org/register](https://sat.org/register).



796972

More information can be found in the *Student Registration Booklet* or at [sat.org/test-day-checklist](https://sat.org/test-day-checklist).



# The SAT<sup>®</sup> and SAT Subject Tests<sup>™</sup> Test Day Checklist

## Before Test Day

### □ Print your admission ticket

Sign in to your online College Board account to print your ticket. (Or, if you received your printed admission ticket in the mail, have it ready to bring on test day.) You must show your admission or waitlist ticket to get into the testing room. Electronic copies are not allowed. And remember to print and bring an updated admission ticket if you've made changes to your registration to print and bring an updated admission ticket

### □ Check your photo ID

You need to bring a photo ID that is valid (unexpired), original, government- or school-issued, and that bears your full legal name. The name on your ID must exactly match the name on your admission or waitlist ticket. Additional ID requirements may apply—see the *Student Registration Booklet* or visit [sat.org/test-day](http://sat.org/test-day).

### □ Check the SAT Test Center Closings page

In case of bad weather, check [sat.org/test-center-closings](http://sat.org/test-center-closings) to make sure your test center is open. Check on Friday night and again on Saturday morning.

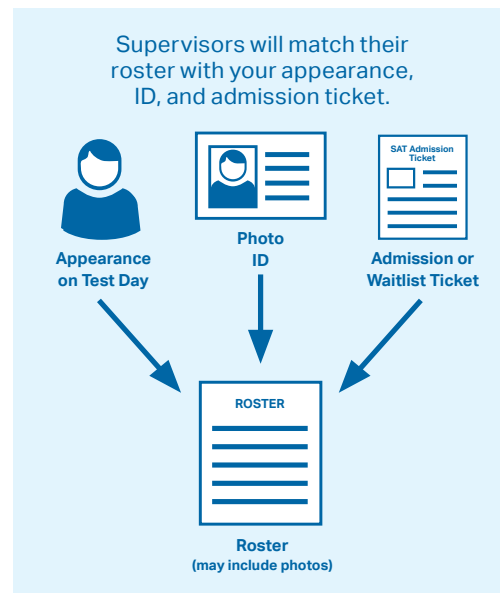
## On Test Day

### □ Bring these things

- Printed admission ticket
- Acceptable photo ID
- Two No. 2 pencils with erasers
- An acceptable calculator (if you're taking the SAT or an SAT Subject Test in mathematics)
- An acceptable CD player (if you're taking a Language with Listening Subject Test)

### □ Leave these things home

Your smartphone, for starters—but there's more. For a full list of prohibited devices and tools, visit [sat.org/test-day-checklist](http://sat.org/test-day-checklist) or see the *Student Registration Booklet*.



More information can be found in the *Student Registration Booklet* or at [sat.org/test-day-checklist](http://sat.org/test-day-checklist).

